



LEAD Curriculum makes your school 100% NCF compliant today!

NCF Recommendation

LEAD Curriculum Alignment?

How is LEAD Nursery-Class 2 curriculum aligned to NCF recommendations?



Play Based Learning: conversations, stories, music, toys, art and craft



Lessons consist of **free play, guided play, guided activities, story-telling** and **conversations** to enable learning



Developmental domains to be covered: physical, cognitive, socio-emotional, language & literacy, aesthetic & cultural



Curriculum covers all developmental domains: Physical Education (Gross & Fine motor skills), Yoga, Mathelagic, EVS, ELGA, Hindi, Visual and Performing Arts, Life skills (Thinking, Communication, collaboration, values)



- Teachers must use **detailed lesson plans** that develop prescribed learning outcomes and competencies
- Teachers must use **Gradual Release Model** of teaching (I do, We do, You do)



- **Detailed lesson plans** along with **teaching resources** and **assessments** aligned to delivering learning outcomes
- Gradual Release Model embedded into core lesson plan structure
 - **I do - Teacher Led**
 - **We do - Group Practice**
 - **You do - Individual Practice**



Content selected and taught should be based on **local context, derived from child's experiences, inclusive, avoid stereotypes**



LEAD content is **inclusive, avoids stereotypes** and follows **5C approach**:

- Connected to Previous Learning
- Connected to Life
- Contextual
- Concentric
- Caters to all Learners



Content to be organized through the **Story-based, Project-based** and **Theme-based** Approach



- LEAD Curriculum across grades and subjects uses the 3 approaches to maximize **student learning**
- All units integrated using **themes**



Flexible and inclusive classrooms with **print-rich vibrant learning corners**



- **Print resources, vocabulary and word wall, student sample display** provide print rich environment in the classrooms.
- **4 corners** set-up enables students to interact with different materials throughout the day.



Use **Teaching Learning Material** (TLMs) in classroom for enhanced learning



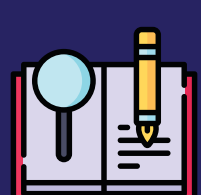
LEAD provides **School Excellence Kit** (SCEK) as part of the offering. This includes all the prescribed TLMs.



- Develop **abstract mathematical ideas** through **concrete experiences**

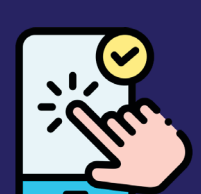


- LEAD's **CPA (Concrete-Pictorial-Abstract) approach** covers mathematical outcomes in complete alignment NCF recommendations.



- NCF recommends a **Four Block approach** of literacy :
 - Oral Language
 - Development
 - Word recognition
 - Reading
 - Writing

- 5 sub-components in LEAD Early ELGA curriculum:
 - **Speaking and Listening**
 - **Phonics**
 - **Sight words**
 - **Reading**
 - **Writing**



Use of **Technology** to access diverse range of content that is **contextual, age-appropriate**, provides an **enjoyable experience** and **feeds the curiosity** of the children.



- LEAD Curriculum offers 500+ Digital resources like **slides, audio- video and interactive resources** as part of lesson plans.
- **LEAD student app** brings learning in school to home by making **stories, practise tests and concept videos** available to students and **parents at home**.



- **Assessments** should be interspersed with the textbooks, and should not create additional burden to the children
- **Holistic report card** showing student progress on all developmental domains



- The assessments at LEAD are learning **unit based** and are seamlessly integrated in the lesson plan as activities (for pre-primary)
- Holistic report cards made available through school ERP and Student app